

THE MISSING LINK

BUILDS STRENGTH, WEIGHT & DISEASE RESISTANCE

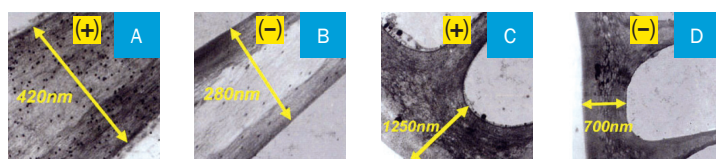
Silica - Formulated from the Ground Up

BUDLINK® SILICA

BUDLINK® is the original and ultimate liquid silica product enjoyed by growers across the world since 1997. BUDLINK's unique recipe has been formulated from the ground up and includes other beneficial elements. BUDLINK® is effective at all stages of growth and flowering. BUDLINK® compensates for differing plant nutrient requirements, which occur in the presence of silica in the same way a body builder's nutritional requirements change as their body changes. BUDLINK® is not a hormone but a plant builder which improves strength and ability to fight against bacteria and insects. It should always be used as part of every regular feeding program.

BUDLINK's active ingredients are imbedded into the plant's cell walls producing plants with thicker and greener foliage. When used as a foliar spray it is easily absorbed by the leaves and also forms a barrier against airborne bacteria and chewing insects and improves harsh light level resilience. It will build strength, add weight and improve the plant's natural disease resistance. Without it you are missing the most important link for achieving outstanding results. BUDLINK® – *The Missing Link!*

EFFECT OF SILICA ON CELL WALLS



PACK SIZES AVAILABLE

Code	Description	Box
BL010	1 Litre	12
BL020	2 Litre	5
BL050	5 Litre	2
BL200	20 Litre	1



- INCREASE WEIGHT AND BULK
- HELPS NUTRIENT UPTAKE
- STRENGTHENS CELL WALLS
- IMPROVES DISEASE RESISTANCE
- IMPROVES YIELD

< Electron micrographs of epidermal cells showing differences in cell wall structure, cell wall thickness, and cell wall density (+/- Silicates) (Magnifications: A & B x 40,000; C & D x 8,000)

WHEN TO USE

BUDLINK® is suitable for all growing systems including cocopeat, expanded clay, perlite, vermiculite, peat moss and NFT. BUDLINK® should be added every time you add nutrient to your tank.

Use for: • Seedlings • Growth • Flowering
• Fruiting • Foliar • Soil

HINTS & TIPS

For improved performance and results use BUDLINK® as 'Part C' when making up your nutrient solution. Use BUDLINK® at the same rate as Part A and Part B (do not exceed 5ml per litre). For example: 3mL Part A + 3mL Part B + 3mL of BUDLINK® per litre of water. *No other silica product is easier to use!*